

# ***PCI/PXI***

## **Getting Started with PCI/PXI-8232 for Windows**

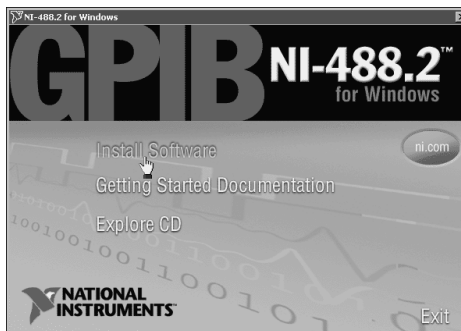
**WINDOWS ME/98**

**WINDOWS 2000/XP**

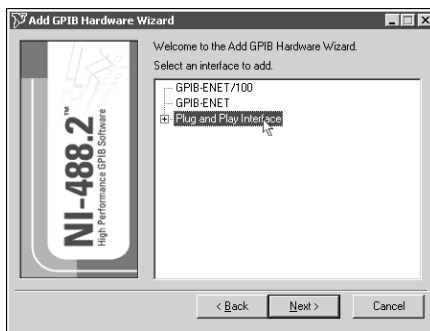
Please turn to the correct section  
for your operating system.

No CD-ROM drive?  
Please see back cover for  
alternative installation options.

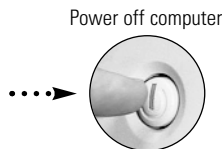
- 1 Insert the NI-488.2 CD, then choose **Install Software**.



- 2 Select **Plug and Play Interface** and click **Next**.



- 3 Select **Shutdown** and click **Finish**, then power off computer.



Continue to step 4 ▶

**4** Install hardware<sup>1</sup>, then power on computer.



**5** Install the PCI-PCI Bridge Driver.

Windows automatically detects the new hardware. Follow the prompts in the Wizard. Select the recommended options when given a choice. If Windows asks where to search for a new driver, clear all checkboxes and click **Next**. If a Wizard did not appear, proceed to the next step.

<sup>1</sup>For help installing your hardware, refer to the *GPIB Hardware Guide* (available on the NI-488.2 CD through **Getting Started Documentation**).

## Install the Windows Me/98 Ethernet Drivers.

### Windows 98

Windows automatically detects the new hardware and displays an **Add New Hardware Wizard** window. Insert the *PCI/PXI Gigabit Ethernet Adapters* CD and follow the directions presented. Choose the **Recommended** options when given a choice.



If Windows asks where to search for a new driver, make sure the box next to **CD-ROM drive** is checked and click **Next**.



**Tip** If Windows displays a dialog box indicating it cannot locate drivers or a file on the *Intel PRO Adapter* CD, insert the *PCI/PXI Gigabit Ethernet Adapters* CD and tell Windows to copy files from the `win98ME` directory of the CD-ROM drive (typically `d:\win98ME\`).



**Tip** If Windows displays a dialog box indicating it cannot locate a file on the Windows 98 CD, try inserting the Windows 98 installation CD, telling Windows to copy files from either the top directory or the `win98` directory of the CD-ROM drive (typically `d:\` or `d:\win98\`).

**Step 6 continued on page 6 ►**

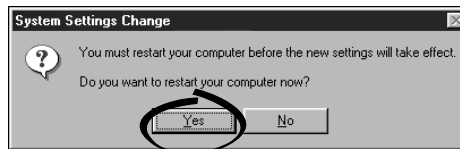
## Windows Me

Windows automatically detects the new hardware and displays an **Add New Hardware Wizard** window. Insert the *PCI/PXI Gigabit Ethernet Adapters* CD and follow the directions presented. Choose the **Recommended** options when given a choice and click **Next**.



For help on cabling instructions and troubleshooting tips, refer to the *PCI/PXI Ethernet Adapters Installation Guide* on the *PCI/PXI Gigabit Ethernet Adapters* CD.

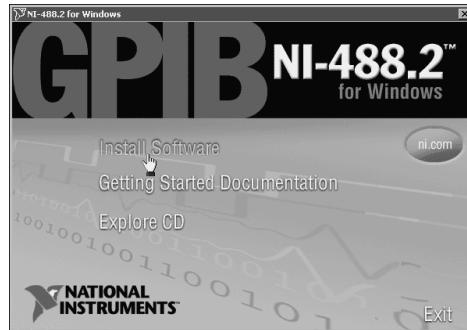
- 7 Restart computer, then connect to your network.



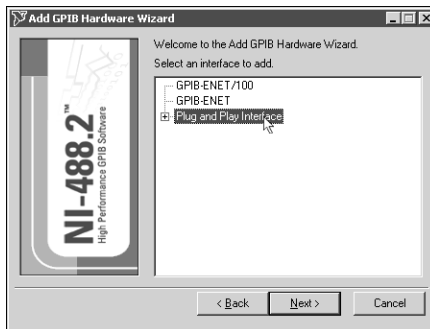
- 8 Run NI-488.2 Getting Started Wizard.



- 1 Insert the NI-488.2 CD, then choose **Install Software**.



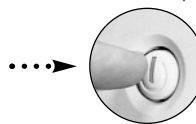
- 2 Select **Plug and Play Interface** and click **Next**.



- 3 Select **Shutdown** and click **Finish**, then power off computer.



Power off computer



**Continue to step 4** ▶

**4** Install hardware<sup>1</sup>, then power on computer.



**5** Install software for PCI-GPIB. (Windows XP only)

Windows automatically detects the new hardware. If the Found New Hardware Wizard prompts you to install software, select **Install the Software Automatically** and follow the wizard. If a wizard did not appear, proceed to the next step.

<sup>1</sup>For help installing your hardware, refer to the *GPIB Hardware Guide* (available on the NI-488.2 CD through **Getting Started Documentation**).

## 6

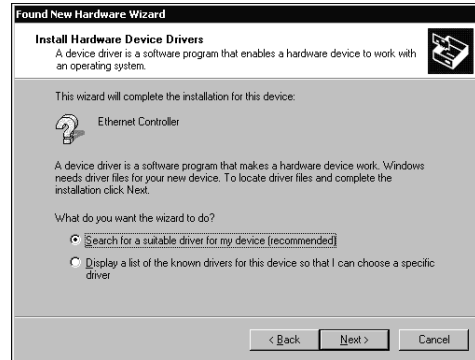
## Install the Windows 2000/XP Ethernet Drivers.



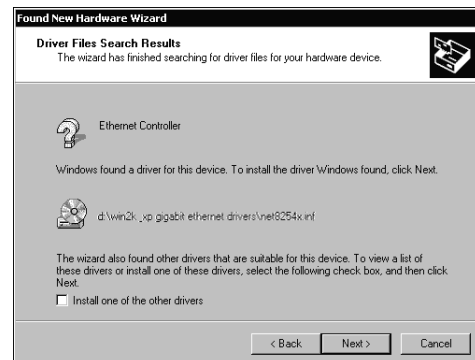
**Note** The NI-488.2 Getting Started Wizard may run at this time. Finish the Ethernet installation described below first before running the wizard.

## Windows 2000

Windows automatically detects the new hardware and displays a **Found New Hardware Wizard** window. Insert the *PCI/PXI Gigabit Ethernet Adapters* CD and follow the directions presented. Choose the **Recommended** options when given a choice.



If Windows asks where to search for a new driver, make sure the box next to **CD-ROM drives** is checked and click **Next**.



**Step 6 continued on page 10** ▶



## Windows XP

Windows automatically detects the new hardware and displays a **Found New Hardware Wizard** window. Insert the *PCI/PXI Gigabit Ethernet Adapters* CD and follow the directions presented. Choose the **Recommended** options when given a choice and click **Next**.



**Tip** If Windows displays an **Insert Disk** dialog box indicating it cannot locate a file on the *Intel PRO Adapter* CD, insert the *PCI/PXI Gigabit Ethernet Adapters* CD and tell Windows to copy files from the `Win2kXP` directory of the CD-ROM drive (typically `d:\Win2kXP\`).

For help on cabling instructions and troubleshooting tips, refer to the *PCI/PXI Ethernet Adapters Installation Guide* on the *PCI/PXI Gigabit Ethernet Adapters* CD.

7

Run NI-488.2 Getting Started Wizard.



# Alternative Driver Installation Options for the PCI/PXI-8232

The installation instructions illustrated for each operating system in this document are appropriate for most users. However, if your system does not contain a CD-ROM drive, try one of the following alternatives to load the GPIB and Ethernet drivers.

- If your system is not equipped with a CD-ROM drive, connect an external CD-ROM drive, such as a USB CD-ROM drive, and load the GPIB and Ethernet drivers directly from their respective CDs.
- Install the Ethernet driver first, and then download the NI-488.2 for Windows driver from the National Instruments Web site.
  1. Install the PCI/PXI-8232 in your computer.
  2. At startup, cancel the **Add New Hardware Wizard** that displays it has found a PCI Communication Device.
  3. Install the Ethernet driver using any of the other options on this page, as appropriate.
  4. Use the Ethernet connection to download the NI-488.2 for Windows driver from the National Instruments Web site. Access the **Drivers and Downloads** page at [ni.com/download/](http://ni.com/download/).
- If you have an existing Ethernet connection in your computer, download the Intel Ethernet driver from the National Instruments Web site. Access the **Drivers and Downloads** page at [ni.com/download/](http://ni.com/download/).
- Use another computer that has a CD-ROM drive to copy the Ethernet driver onto a 3.5 in. floppy disk.
  1. Open a DOS command window.
  2. Change to the directory on the CD that matches the OS you want to use with the diskette.
  3. Change to the `\MAKEDISK` directory.
  4. Depending on your OS choice, type: `MAKE2KXP`, `MAKENT`, or `MAKE98ME` [destination (optional; A: if not specified)].



[ni.com](http://ni.com)

Go to [ni.com/support](http://ni.com/support) for the most current manuals, examples, and troubleshooting information. For telephone support in the United States, create your service request at [ni.com/ask](http://ni.com/ask) and follow the calling instructions or dial 512 795 8248. For telephone support outside the United States, contact your local branch office:

Australia 1800 300 800, Austria 43 0 662 45 79 90 0, Belgium 32 0 2 757 00 20, Brazil 55 11 3262 3599, Canada (Calgary) 403 274 9391, Canada (Montreal) 514 288 5722, Canada (Ottawa) 613 233 5949, Canada (Québec) 514 694 8521, Canada (Toronto) 905 785 0085, Canada (Vancouver) 514 685 7530, China 86 21 6555 7838, Czech Republic 420 2 2423 5774, Denmark 45 45 76 26 00, Finland 385 0 9 725 725 11, France 33 0 1 48 14 24 24, Germany 49 0 89 741 31 30, Greece 30 2 10 42 96 427, India 91 80 51190000, Israel 972 0 3 6393737, Italy 39 02 413091, Japan 81 3 5472 2970, Korea 82 02 3451 3400, Malaysia 603 9131 0918, Mexico 001 800 010 0793, Netherlands 31 0 348 433 466, New Zealand 1800 300 800, Norway 47 0 66 90 76 60, Poland 48 0 22 3390 150, Portugal 351 210 311 210, Russia 7 095 238 7139, Singapore 65 6226 5886, Slovenia 386 3 425 4200, South Africa 27 0 11 805 8197, Spain 34 91 640 0085, Sweden 46 0 8 587 895 00, Switzerland 41 56 200 51 51, Taiwan 886 2 2528 7227, Thailand 662 992 7519, United Kingdom 44 0 1635 523545

National Instruments™, NI™, NI-488.2™ and [ni.com](http://ni.com)™ are trademarks of National Instruments Corporation. Product and company names mentioned herein are trademarks or trade names of their respective companies.

For patents covering National Instruments products, refer to the appropriate location: **Help»Patents** in your software, the `patents.txt` file on your CD, or [ni.com/patents](http://ni.com/patents).

